



# MULBERRY & BIGLAND GREEN CENTRE

*A purpose built  
community centre  
in the heart of  
Shadwell*

## VENUE HIRE

We have various  
flexible spaces  
for both large &  
small events

[www.mbgc.co.uk](http://www.mbgc.co.uk)

BROCHURE



## Theatre

*Situated on the ground floor, this beautiful professional theatre space can be used for theatre productions or rehearsals, as well as talks, lectures, award ceremonies and conferences.*



## Community Hall & Kitchen

*Our main hall is versatile and flexible, providing an excellent space measuring approximately 12m x 8m. It is regularly used for fitness classes including aerobics and Zumba and can be hired for workshops, staff away days and seminars. The hall features a serving window which links the space to the adjoining community kitchen equipped with fridge, microwave and tea urn.*



## Classrooms

*We have 5 classrooms of various sizes on the first floor. That can be used for a variety of activities including meeting and training events. Each classroom can accommodate up to 17 people and comes fully equipped.*

## IT Suite

*Classroom 5 is ideal for the delivery of accredited training courses and bite-sized qualifications. The IT Suite comes equipped with IT equipment, interactive boards, AV system and fibre optic wi-fi.*



## MEETING ROOMS



**150 seat fully licensed theatre**



**Fully Accessible**



**All rooms & spaces fully equipped**  
*with IT, Interactive boards, AV systems & Superfast Fibre Optic WiFi*



**Within walking distance of Shadwell and Whitechapel station**



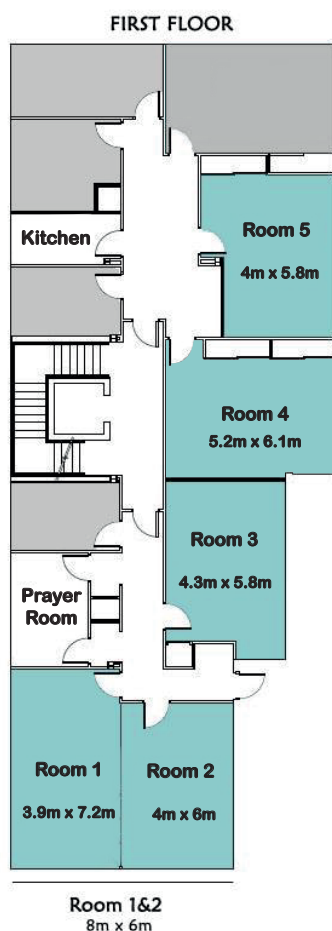
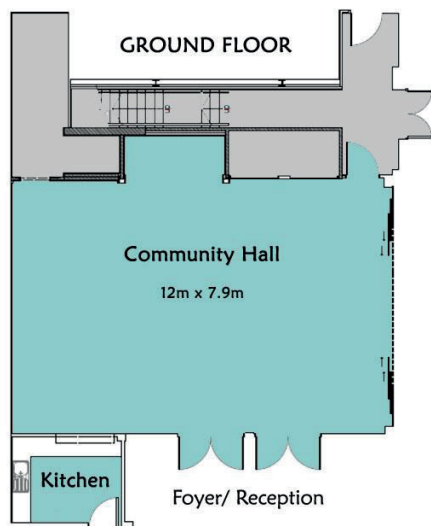
**Affordable rates for hire**



**Community kitchen facilities**

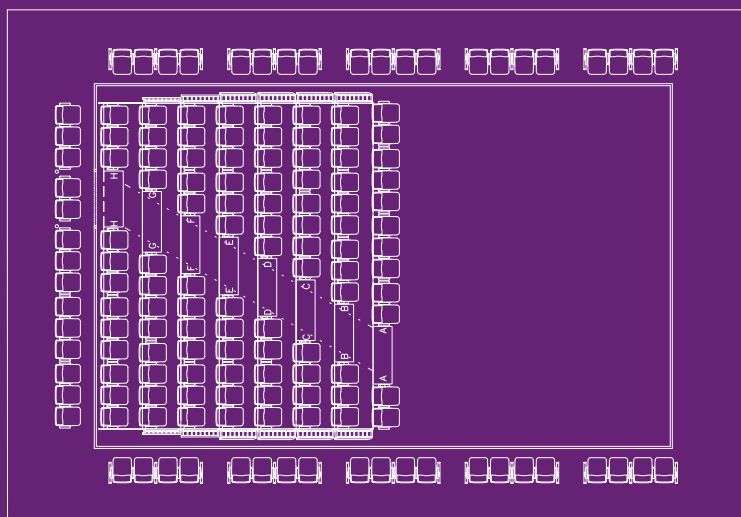


**Online booking system**



# ROOMS & RATES

We have various  
flexible spaces  
for both large &  
small events



## Theatre Space & Hire Rates

Space	Dimensions	Capacity
Theatre space with no bleacher seating	8m x 13m	150
Theatre space with bleacher seating	8m x 6.1m	150
Charity Rate:	£66 p/h	(Additional charges may apply for technical support & use of equipment)
Commercial Rate:	£100 p/h	

## Room Dimensions & Maximum Capacity

Space	Dimensions	Capacity
Community Hall	12m x 7.9m	150
Classroom 1	3.9m x 7.2m	17
Classroom 2	4m x 6m	17
Classroom 1&2	8m x 6m	34
Classroom 3	4.3m x 5.8m	17
Classroom 4	5.2m x 6.1m	17
Classroom 5	4m x 5.8m	17

## Room Hire Rates (Mon-Fri 8am-6pm)

Space	Charity / Educational Rate	Commercial Rate
Community Hall	£44 p/h	£66 p/h
Classroom 1 - 5	£16.50 p/h	£27.50 p/h
Classroom 1&2	£33 p/h	£55 p/h

\*Please note that out of hours and weekend rates are negotiable

\*\*Room reservation requests will be processed on a first come first served basis. As rooms are limited, please wait for confirmation of room availability before making any arrangements.

*The Mulberry & Bigland Green Centre is located off Bigland Street, behind Mulberry School for Girls between Cannon Street Road and Watney Market.*

*The MBGC is approximately 5 minutes' walk from Shadwell DLR and Overground stations and approximately 15 minutes' walk from Whitechapel Tube station.*

**Directions to MBGC from Shadwell DLR:**  
*Exit down the stairs and turn right out of the DLR Station on to Watney Street. After approximately 50 metres turn left on to Bigland Street. Follow the road around and continue walking for about three minutes past Bigland Green Primary School until you reach the MBGC gate on your right. The centre is set back from the road.*

**Directions to MBGC from Shadwell Overground Station:**  
*Exit the station on to Cable Street and turn left. Take the next left on to Watney Street, past the DLR Station and then follow the directions above.*

**Walking from Whitechapel Tube Station:**  
*Turn right out of the station, walk along Whitechapel Road and turn left on to New Road. Walk down New Road, continue along Cannon Street Road and turn left on to Bigland Street. The MBGC gate is located on the left hand side just before Bigland Green Primary School.*

**Nearest Buses:**  
135, 115 & 15



**FIND US  
HERE**

**AT THE HEART OF  
EAST LONDON**

FOR MORE INFORMATION  
**020 7790 6327(ext.329)**  
[mbgadmin@mulberryschoolstrust.org](mailto:mbgadmin@mulberryschoolstrust.org)

VENUE ADDRESS  
**15 Richard Street**  
(Off Bigland St)  
London E1 2JP